



TMD Relief
2015-2016-2017
Patented solution (EU)

Instrument for exercising of the muscles of the mouth. Non Sterile Class 1 Medical Device

Measurements and Monitoring

MEASUREMENT PROCEDURE

Full reference to the measurement protocol:

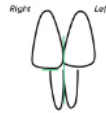
<http://jo.my/h7kcle>



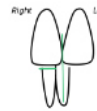
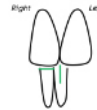
Using maxillary incisor as reference: Draw a horizontal line on the op- placed mandibular incisor using the incisor end of the maxillary incisor as a guide.



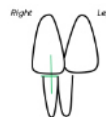
If the midline of the mandibular and maxillary incisors is within 1 mm of deviation, these midlines are acceptable reference points for lateral excursion measurements.



Otherwise, mark the midlines for reference.

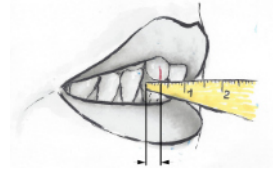


An alternative method is to mark a line on the face of the maxillary and mandibular incisors.

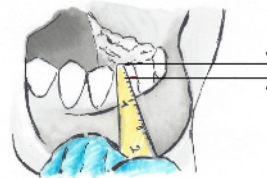


MEASUREMENTS

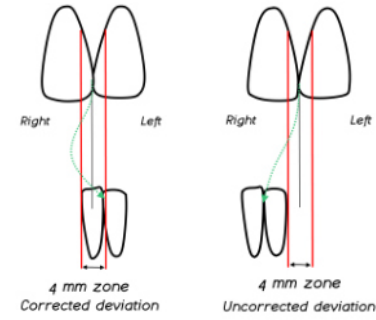
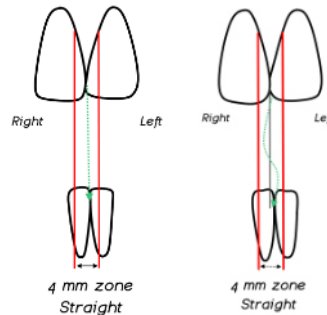
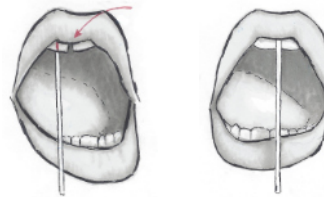
Horizontal overlap measurement.



Vertical overlap measurement.



Opening route.



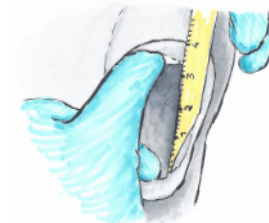
Opening movements: free movement without pain.



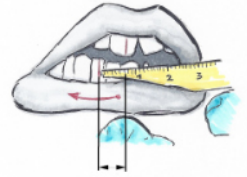
Opening movement: movement with maximum opening



Maximum assisted opening.



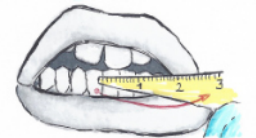
Right side excursion.



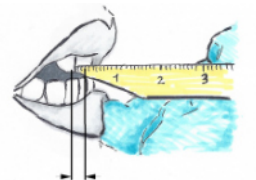
Left side excursion.




Alternative method for measuring lateral excursion.



Protusion



TO BE DELIVERED TO THE ATTENDING PHYSICIAN

					
Initial					
15 days					
30 days					
60 days					
90 days					
Opening					
Lateral movement					
Chronic pain					
Functional limit					



ATTENZIONE

Statistical monitoring of the device is very important because it allows for constant improvement of the device and its effectiveness.

For this reason we ask you to send us a scanned copy of this monitoring sheet.

You can do this anonymously, by e-mail or hard copy mail, to the following addresses:



Syde s.r.l.
Piazza della Costituzione 5
50041, Calenzano, FI Italy
Tel. 0558873364



info@tmdrelief.eu

Rev. 01 del 09/07/2019

MADE IN ITALY



TMD Relief
www.tmdrelief.eu

NON-STERILE

FOR PERSONAL USE



- Package contents:**
- n. 1 TMD Relief body
 - n. 2 Inox blades with silica grips
 - n. 1 Allen key
 - n. 1 Ruler
 - n. 1 Safety strap



Syde s.r.l.
Legal Office in
Via Leonardo da Vinci 16,
50132, Firenze IT
info@syde.technology
syde.technology